

Smart Energy  Better Life  
and Sustainability

---



**PEA**  
PROVINCIAL ELECTRICITY AUTHORITY

# Maintenance Work Details Electrical Systems and Substations

 Maintenance Services Division

A photograph of a high-voltage electrical substation. In the foreground, a worker wearing a white hard hat, a light-colored jacket, and a pink safety vest is looking at a tablet. The background shows complex electrical infrastructure with metal frames, insulators, and power lines under a clear blue sky. A large purple circle with white concentric lines is overlaid on the center of the image, containing the text.

Do you have  
**a plan for  
an outage?**



Have you  
ever been  
**maintenance  
an electrical  
system?**

## Transmission System Engineering Services Division

- ⚡ Design, construct and install power substations of various voltage levels integrated with communication and power safety systems and consultancy services.

## Maintenance Services Division

- ⚡ Electrical system maintenance services, inside and outside office buildings and plants.
- ⚡ Electrical substation and control room maintenance services.
- ⚡ Electrical instrument and appliance inspection and repair services.
- ⚡ Electrical system warranty and certification services.

# PEA Engineering Services Department

## Distribution Engineering Services Division

- ⚡ Design, construct and install low-medium voltage electrical systems inside and outside buildings, with consultancy services
- ⚡ Design, procure and install EV charging stations nationwide as well as providing comprehensive analytical service and consultation on the EV business.

## Energy Management Business Service Division

- ⚡ Business management and consultancy services for solar energy and energy conservation for public and private agencies.

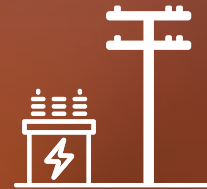
# Maintenance Services Division



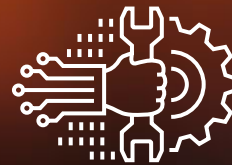
Electrical appliance  
repair and upgrade



Certification



Substation maintenance



Electrical system  
maintenance



Electrical system  
inspection and solution



Training on  
electrical power



Special Test



Consultancy service



# SCOPE OF MAINTENANCE

## ⚡ ELECTRICAL SUBSTATION 115 kV

- 115 KV TRANSFORMER
- LIGHTNING ARRESTER
- PROTECTION RELAY
- AC&DC DISTRIBUTION BOARD

- SF6 CIRCUIT BREAKER
- DISCONNECTING SWITCH
- BATTERY CHARGER
- GROUNDING SYSTEM

- CURRENT TRANSFORMER
- VOLTAGE TRANSFORMER
- BATTERY
- etc...



# SCOPE OF MAINTENANCE

## ⚡ ELECTRICAL SYSTEM

- 22/33 KV COMPONENT
- AIR CIRCUIT BREAKER (ACB)
- MDB & E MDB PANEL
- DISTRIBUTION BOARD

- RING MAIN UNIT (RMU)
- CAPACITOR BANK
- HV & GEN PANEL
- GROUNDING SYSTEM

- MV TRANSFORMER
- AUTOMATIC TRANSFER SWITCH
- LOAD CENTER
- etc...

# Service Privileges



## 24/7 Keep-in-touch Support

- ⚡ Professional services to instantaneously resolve outages at electrical systems or substations under PEA's care upon notification.



## Key Account Customer Program

- ⚡ Key account customers can access special services and privileges, including pre-launch tests of products and services



## Consult with PEA's Specialists

- ⚡ Consultancy services from specific field experts on electrical system development and upgrade

**Lead to further**

# Preventive Maintenance Report

Maintenance report of electrical system and appliances against standards  
Data contained in the report are certified and can be used for planning of future predictive maintenance



## **PdM Predictive Maintenance**

Integrated maintenance data with executive decisions to plan future services upon engineering safety and cost consideration



## **PM Preventive Maintenance**

Annual or planned maintenance to prevent possible failures from general use that may cause significant damage



## **CM Corrective Maintenance**

Entire or partial maintenance with a focus on faulty parts.



Once we have sufficient data of the electrical system or equipment, predictive maintenance is an attractive choice since it provides not only prevention from potential incidents, but also critical data for executives to prepare for future work under value-for-money consideration.

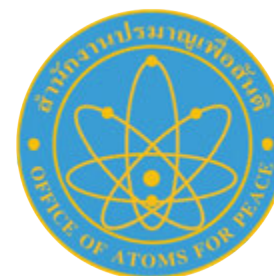


# ⚡ Our Customers



กองทัพบก

ธนาคารแห่งประเทศไทย  
BANK OF THAILAND



**MinebeaMitsumi**  
*Passion to Create Value through Difference*

**Panasonic**



**Kubota**

# ⚡ More Information



## Phone Number

02-590-9560



## Email Address

waraporn.sin@pea.co.th



## Website

<https://sbiz.pea.co.th/>



**PEA**  
PROVINCIAL ELECTRICITY AUTHORITY